



AOYAMA GAKUIN UNIVERSITY

INTRODUCING AGU

OPEN MINDS, OPEN HEARTS



TOKYO, JAPAN

地の塩、世の光

THE SALT OF THE EARTH, THE LIGHT OF THE WORLD
(MATTHEW 5:13-16)

Viewing Japan through a global lens, Aoyama Gakuin University cultivates graduates who can connect to the world around us and contribute locally and internationally as “Salt of the Earth, Light of the World.”

With pride in the heritage of our institutions and respect for all peoples and societies, our faculty, staff, and students work together to create an educational and research community that responds to the needs and ideas of our times.



FOUNDED IN

1874

BY MISSIONARIES OF THE METHODIST CHURCH



17,000+
UNDERGRADUATES



1,200+
GRADUATE STUDENTS

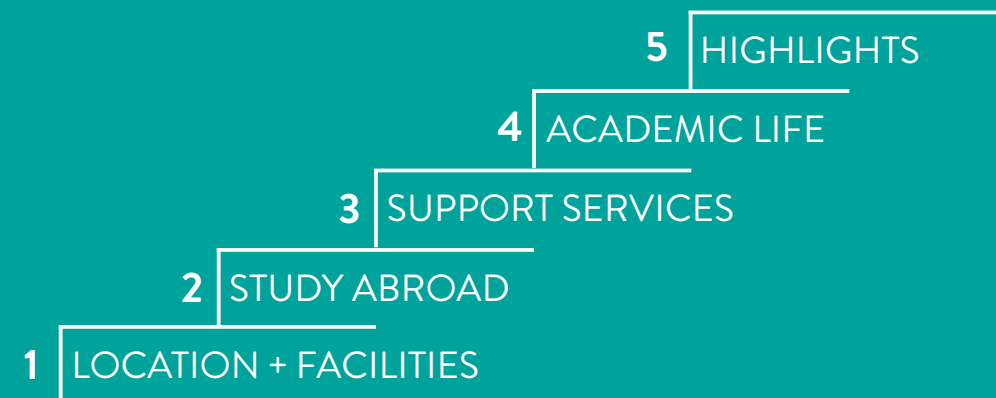


590+
ACADEMIC STAFF



300+
ADMINISTRATIVE STAFF

Introducing AGU in Five Steps



AOYAMA, TOKYO

THE PLACE TO BE IN TOKYO

Our main campus is located in the dynamic and stylish district of Aoyama in the heart of Tokyo's Shibuya Ward. This area offers a wide variety of cultural sites, concerts, plays, films, music festivals, arts and sporting events.

From our main campus, you have easy access to the best of Japan's urban lifestyle. AGU – an exciting place to be!



5
minutes

SHIBUYA

25
minutes

TOKYO TOWER

LOCATION+FACILITIES



20
minutes

THE NATIONAL DIET LIBRARY AND GOVERNMENT BUILDINGS



SAGAMIHARA CAMPUS

The Sagamihara Campus is located in the lively, modern town of Sagamihara in Kanagawa Prefecture just south of Tokyo, renowned as the home of Japan's aerospace industry. Whether learning in a lab or in a classroom, you'll be using the latest state-of-the-art equipment, the same used in high-tech companies.



RESEARCH AND INNOVATION

Nurturing global leaders in science and technology.

MODERN, WELL EQUIPPED LIBRARIES

Open day and night, seven days a week, our libraries provide extensive services and collections with spacious reading/study areas.



LARGE OPEN SPACES

Relax with friends in green surroundings.



AGU IS WITHIN YOUR REACH

ESTIMATED COSTS FOR DEGREE-SEEKING UNDERGRADUATES

ONE ACADEMIC YEAR, DEPARTMENT OF JAPANESE LANGUAGE AND LITERATURE

* US\$ amounts based on US\$1 = ¥ 110

TUITION	¥813,000	(US\$7,390*)	
OTHER FEES	¥330,000	(US\$3,000*)	ENTRANCE FEE ¥ 160,000
ROOM AND BOARD	¥1,000,000	(US\$9,090*)	
BOOKS AND SUPPLIES	¥60,000	(US\$545*)	
TRANSPORTATION	¥30,000	(US\$272*)	
NATIONAL HEALTH INSURANCE	¥24,000	(US\$218*)	VARIES EACH YEAR
PERSONAL EXPENSES	¥500,000	(US\$4,545*)	

SCHOLARSHIP OPPORTUNITIES ABOUND

Aoyama Gakuin University Global Scholarship for International Students

GPA's in the top 50% **300,000** yen/ year (2015)

GPA's in the top 10% **500,000** yen/ year (2015)

EXTRA FINANCIAL SUPPORT

The following scholarships are examples of those received by Aoyama Gakuin University students in 2015. There are many other scholarship opportunities offered by private foundations and companies.

- Japanese Government's MEXT Scholarship
- Japan Student Services Organization (JASSO) Honors Scholarship for privately financed international students
- Scholarships offered by local governments and international associations
- Scholarships offered by private foundations

WANT TO KNOW MORE?

>>> www.aoyama.ac.jp/en/prospective/scholarships_support <<<



I'm very grateful to receive the global scholarship. With school fees and living costs, my family funding was tight. To reduce the burden on my family, I had to work a part-time job. However, after receiving the global scholarship, I was able to concentrate on my research and projects, with less burden on my family. Without the scholarship it would have been difficult to continue my student life. I'm very thankful for this support. I'm looking forward to flourishing at Aoyama Gakuin, while realizing my dreams and my personal study goals.

- Zheng Qiaofeng (Student from China, Department of Law)

STUDYING AT AGU IS REASONABLE.
THE BENEFITS?

BEYOND PRICE



ESTIMATED COSTS FOR NON-DEGREE-SEEKING EXCHANGE STUDENTS

ONE ACADEMIC YEAR

* US\$ amounts based on US\$1 = ¥110

ROOM AND BOARD **¥1,155,000** (US\$10,500*)

BOOKS AND SUPPLIES **¥60,000** (US\$545*)

TRANSPORTATION **¥30,000** (US\$272*)


NATIONAL HEALTH INSURANCE **¥24,000** (US\$218*)

PERSONAL EXPENSES **¥500,000** (US\$4,545*)

Exchange students can take courses for credit

WANT TO KNOW MORE?

>>> <http://web.iec.aoyama.ac.jp> <<<



SUPPORT SERVICES

Once you get to AGU you'll have plenty of help. Here are just a few of the ways we support your health, welfare, and academic achievement.

HOW DO WE SUPPORT YOUR LIFE AND STUDY AT AGU?



Friendly English-speaking staff
and warm atmosphere



Over 100 courses taught in English



Japanese language classes



Academic Advisor system



Tutor System



Scholarships and
financial assistance



Career Center



Visa support

Experience modern and traditional Japanese culture:

Discover the latest manga, anime, and fashion trends in Shibuya and Harajuku, and enjoy Kabuki, sumo, and other cultural events throughout Tokyo.

EXTRACURRICULAR CULTURAL ACTIVITIES

GREAT FACILITIES FOR STUDY AND LEISURE

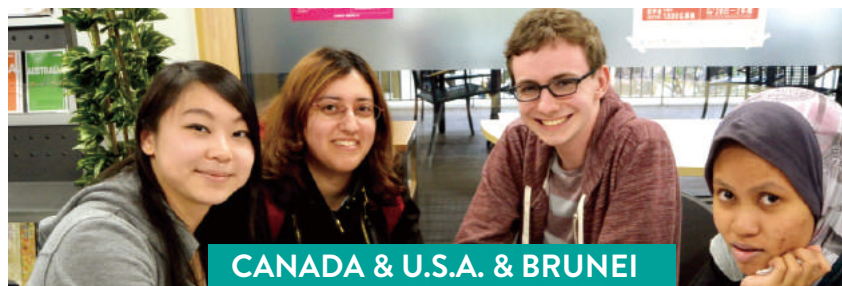
At AGU we do our best to make your time convenient and productive:

Free Wi-Fi, fully equipped fitness centers,
computer rooms, off-campus library access.

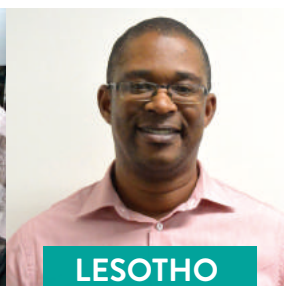
93.2%

AGU GRADUATES FIND JOBS

A HIGH PERCENTAGE OF AGU GRADUATES FIND
EMPLOYMENT



CANADA & U.S.A. & BRUNEI



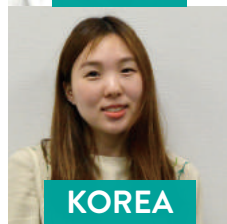
LESOTHO



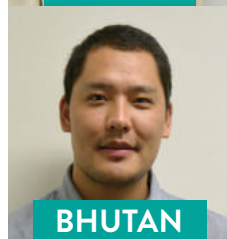
AZERBAIJAN



KENYA



KOREA



BHUTAN



AUSTRALIA



U.S.A.



MALAYSIA



NIGERIA



U.K.



GERMANY



CANADA



ECUADOR



VIETNAM



INDONESIA



THAILAND



TAIWAN



U.S.A.



OUR FRIENDS FROM AROUND THE WORLD



110+

OVERSEAS PARTNER
UNIVERSITIES

500+

INTERNATIONAL STUDENTS
FROM 35 COUNTRIES

200+

CLUBS AND SOCIETIES



4

SPORTS AND
FITNESS CENTERS

2

LIBRARIES



1

BASEBALL FIELD



What is the Chat Room?

The Chat Room is a place where Aoyama Gakuin students of various ages can practice their foreign language skills and learn about other cultures.

Chat sessions are led by “Chat Leaders” who are international students employed by the university. They create a fun and comfortable environment for students to practice their English. We also hold regular events including Halloween, Christmas, and international food day.

Sessions are primarily in English but there are also Chinese, Korean, German and Spanish, and other language sessions offered.



A chance to improve your Japanese

For international students we offer free Japanese Chat Sessions where you can practice your Japanese. It is a great chance to use what you learned in class in an informal environment and learn about Japanese culture from the Japanese Chat Leaders.

Sessions are divided by level so whether you are serious about improving your Japanese or just want to make new friends, the Chat Room is a wonderful resource.





WHERE YOU WILL LIVE AGU I-HOUSE

In April 2017, Aoyama Gakuin is opening two coed dormitories called “International House” for international students and also for Japanese students whose homes are too far away to commute. Living in a community with people from diverse cultures who speak multiple languages is just one way that AGU strives to enhance your growth and learning experience in Japan.

MUSASHI KOSUGI



Commuting time :

Aoyama Campus: 30 mins

Sagamihara Campus: 60 mins

Room size: Single, 11.51m²

Cafeteria, free Wi-Fi, fitness center,
communal kitchen, live-in dormitory manager

Closest station: Musashi Kosugi (12 min walk)

SAGAMIHARA



Commuting time :

Sagamihara Campus: 1 min

Aoyama Campus: 75 mins

Room size: Single, 16.25m²

Internet, public bath, shower room on each floor,
communal kitchen, security guard

Closest station: Fuchinobe Station (10 min walk)



DEGREE PROGRAMS COLLEGES AND SCHOOLS

- ◆ Literature
- ◆ Education, Psychology, and Human Studies
- ◆ Business
- ◆ Law
- ◆ Economics
- ◆ International Politics, Economics, and Communication
- ◆ Cultural and Creative Studies
- ◆ Science and Engineering
- ◆ Social Informatics
- ◆ Global Studies and Collaboration



LIST OF COURSES TAUGHT IN ENGLISH

WE HAVE OVER 100 CLASSES TAUGHT IN ENGLISH

- Journalistic Writing (a)
- Creative Writing (a)
- Speech Communication (a)
- Traditional Industries (b)
- Japanese Studies (b)
- Career Development (c)
- Effective Negotiation (c)
- Foundation in Basic Business Administration (c)
- Media English (d)
- Culture and Society (e)
- Studies on the United Nations (e)
- International Law (e)
- Microeconomics (e)
- Cyber Communication (e)
- Multinational Business Management (e)
- Japanese Politics (e)
- Area Studies -EU Economy (e)
- Diplomatic History (e)
- Seminar in Physics and Mathematics (f)
- Financial Management (f)
- Multimedia Engineering (f)
- Discrete Mathematics (f)
- Information Networks (f)
- Topics in Japanese History (g)
- Introduction to Leadership Studies (g)
- Topics in Japanese Economy (g)
- Introduction to Asian Economies (g)
- Japanology (h)
- Problems in Modern Society (h)

AND MORE...

AS OF APRIL 2016

(a) Literature, Department of English (b) Cultural and Creative Studies (c) Business (d) Economics (e) International Politics, Economics, and Communication (f) Science and Engineering (g) Global Studies and Collaboration (h) General Education

FOR MORE INFORMATION

>>> <http://web.iec.aoyama.ac.jp> <<<

GRADUATE SCHOOL

GRADUATE SCHOOLS:

Literature / Education, Psychology, and Human Studies / Business / Law / Economics / International Politics, Economics, and Communication / Cultural and Creative Studies / Science and Engineering / Social Informatics

PROFESSIONAL GRADUATE SCHOOLS:

International Management (MBA) / Law / Professional Accountancy

WE ALSO PROVIDE JAPANESE LANGUAGE CLASSES AT ALL LEVELS

KONNICHIWA

ARIGATOU GOZAIMASU

YOROSHIKU ONEGAI SHIMASU

OISHII

DAIGAKUSEI

ITADAKI MASU

BIKKURI!

かわいい!

お願いします

ごちそうさまでした

失礼します

日本語を勉強しています

LEVEL 1 (Beginner)

LEVEL 2

LEVEL 3

LEVEL 4

LEVEL 5

LEVEL 6 (Advanced)

MAKING CONNECTIONS WITH GLOBAL SOCIETY



GLOBAL STUDIES PROGRAM

The Global Studies Program is an interdisciplinary program offered in the School of International Politics, Economics, and Communication, which aims to provide students with the skills and knowledge they need to effectively participate in global society. All of the courses in this program are taught in English by both Japanese and foreign professors, and are open to both regular and foreign exchange students. Students can choose from among a wide range of courses within the program itself or in combination with courses taught in other departments. Sample areas of study include:

International Politics: international relations, international law, global governance, international organizations, diplomacy, peace and cooperation, strategic studies, media and international politics, political science, political thought, comparative politics, area studies

International Economics: microeconomics and macroeconomics, economic globalization, international finance and trade, global business, multinational business management, international marketing, development economics, migration, area studies

International Communication: Japanese linguistics, Japanese studies, intercultural communication, international business communication, conference communication, international negotiations, intercultural dialogue and ethics, media and Internet studies

The Global Studies Program gives students the freedom to design their own individualized courses of study, allowing them to focus on subjects which they are especially interested in and which will best prepare them for their future careers.

Soon after beginning coursework in GSP, I realized the high quality of the program. GSP brings together students with unique backgrounds and various interests, so you not only learn from class, but also from your classmates. The professors are excellent at combining theory with relevance to real world international issues, and resources are available to grow as a person, both personally and professionally. I have found the quality of instruction to be wonderful, and I definitely have many fond memories from GSP.

-Edward Obermeyer (Exchange student from Wichita State University, U.S.A.)



PASSIONATE PEOPLE

CREATING COOL SCIENCE

HIGHLIGHT



SCHOOL OF SCIENCE AND ENGINEERING INTERNATIONAL GRADUATE PROGRAM

This department welcomes students from all over the world, offers graduate degree programs and courses taught in English in a wide range of fields in science and engineering, and guides students in their career development toward both academic and industrial institutions. We support international students during their transition to life in Japan from the moment they arrive.

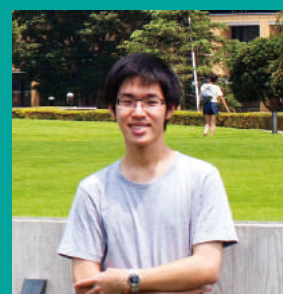
The Graduate School of Science and Engineering offers courses in specialized areas such as Chemistry, Materials Sciences, Biological Science, Electrical Engineering and Electronics, Intelligence and Information, and Management Technology. Students have the opportunity to design their own program.

We are proud of our advanced facilities designed for research and development, such as the Center for Instrumental Analysis, providing access and training for cutting-edge research instrumentation. Research activities here significantly enhance academic and professional interactions among faculty, staff, and students.

In addition to high-performance workstations, autonomous robots, interactive robots, high-grade vision sensing devices, and other cutting-edge equipment available at each associated laboratory, students can access the Common Research Spot for advanced study and training tools, such as motion capture systems, forefront wearable devices, and wireless human sensing micro-equipment.

I chose this College for its exceptional learning environment. I'm thankful to the Management Technology course for enabling me to look deeply into details about technological applications in engineering management. The outstanding facilities also helped me to focus on my studies and collaborate with other students. Furthermore, the professors in the college provided valuable guidance, consultation, and encouragement for my studies.

-Johmphot Tantawichien (Student from Chulalongkorn University, Thailand)



A portrait of Alessandra Leopardi, a young woman with long brown hair, smiling and wearing a blue top with a silver beaded necklace. The background is a blurred green foliage.

ALESSANDRA LEOPARDI

EXCHANGE STUDENT

from University of Florida, U.S.A.

EXPANDING MY WORLDVIEW

I'm truly happy to say that studying abroad at Aoyama Gakuin was the best decision I've made in my life so far, and I have made the most incredible memories all thanks to that decision. I've never felt more welcomed. The Aoyama Gakuin staff and students are very kind, and are always ready to help at a moment's notice. After arriving in Japan and meeting so many kind students, I was surprised at the enthusiasm that students in Japan felt for learning about my own culture. This, in turn, made me happy and enthusiastic as well, because not only did I want to teach students about my culture, but I also became enthusiastic to learn about cultures different from my own. I came to understand how important it is to have a wide perspective of the world's different cultures, because it is necessary for us to come to understand one another as world citizens in order for us to be able to live in harmony. I've made lifetime friends at Aoyama Gakuin, and I honestly believe I've become a better version of myself due to all of my wonderful experiences abroad.



RICHARD EVANOFF PROFESSOR

School of International Politics, Economics, and Communication

BROADEN YOUR CULTURAL HORIZONS AT AOYAMA

Certainly it is possible to study other cultures inside one's own country, but nothing compares with the experience of actually going to another country and learning about its culture first-hand. People from other cultures not only have different food, music, architecture, and customs, but also different values and ways of thinking. The ability to interact effectively with people from cultures which are different from our own is an important skill in our increasingly globalized world. As a cosmopolitan university located in the heart of Tokyo, Aoyama Gakuin University offers students from overseas opportunities to learn more about both traditional and contemporary Japanese culture, to make friends with students from Japan and around the world, to engage with dedicated professors who are accomplished scholars in their fields, and ultimately to acquire an international mindset that enables students to meaningfully contribute to global society and make the world a better place.







EDUCATIONAL OASIS



AOYAMA GAKUIN UNIVERSITY

AOYAMA CAMPUS

4-4-25 Shibuya, Shibuya-ku, Tokyo 150-8366

SAGAMIHARA CAMPUS

5-10-1 Fuchinobe, Chuo-ku, Sagamihara-shi, Kanagawa 252-5258

<http://www.aoyama.ac.jp/en/>